

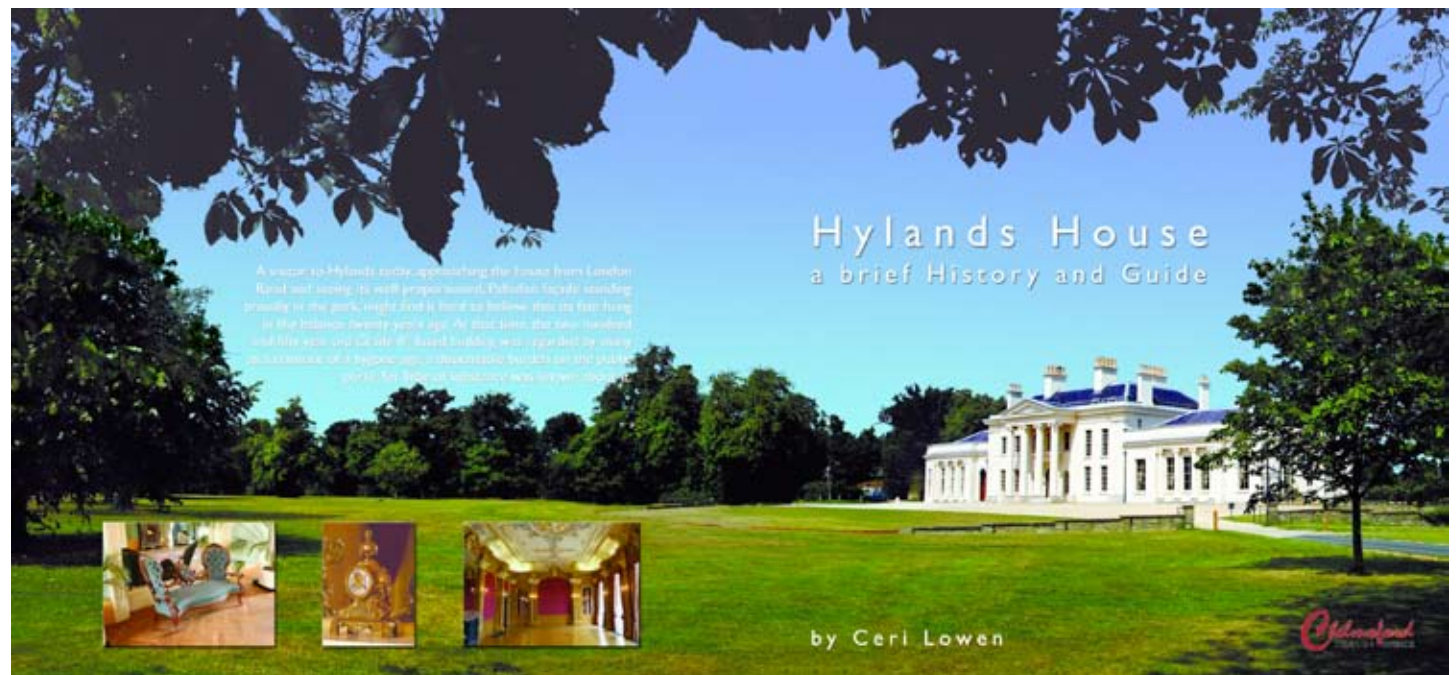


Hylands House Book

A 40 page book about Hylands House, an historic house and gardens in Chelmsford for Essex County Council.

I worked closely with the writer to produce a quality book to be sold around Essex and in the Hylands House shop.

As well as the layout design, quite extensive Photoshop work was required, especially on the cover and to produce the cutout images with shadows.



Front and back cover



Inside spread



Inside spread

L Smith Contracts Brochure

A brochure and folder for a groundworks and civil engineering company.

An A4, 4 page brochure and folder to promote the company.



Front and back cover



Inside spread

SFA Brochure

A 6 page, A4 brochure for a furniture importer

Printed on good quality, silk card, this was a nice quality brochure to promote a quality product.



Front and back cover plus one folded inside page

A La Crème Brochure

A 6 page, 1/3 A4 brochure for a fine dining caterer.

A small folded brochure/leaflet to promote a small business. I also created the chilli illustration.



Inside three pages

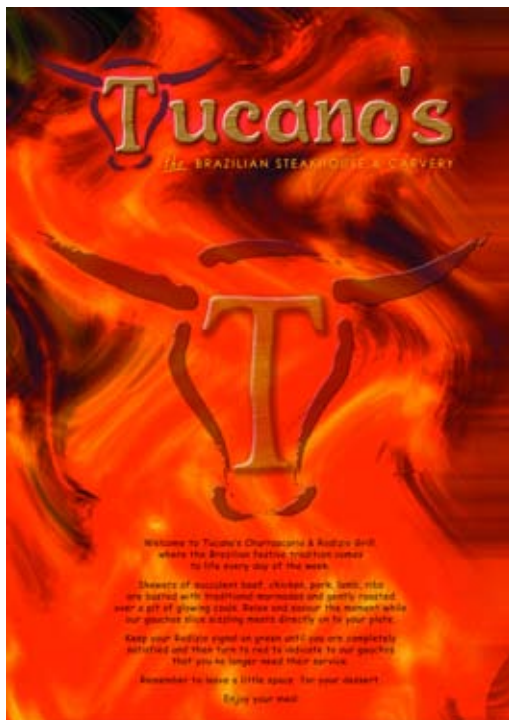


Front cover

Tucano's Menu

A 6 page, A4 menu for a Brazilian restaurant.

A menu for a Brazilian restaurant. I also designed the logo for the company.



Front cover



Outside spread



Inside spread



Inside front

SFA Furniture Advert

Two double page spread adverts for a furniture importer to appear in a national magazine.
An advert for a furniture importer. Plenty of cutouts here!

Our aim is your success

Email: sales@sunshineheart.co.uk
or call 01652 637716
or fax 01652 637717

s f a
FURNITURE
& WALL DECORATION

Catswood

Stylish modern bedroom range of painted pine with solid oak tops.

Solid Oak

Large range of solid oak furniture at very competitive prices. Don't leave the show without the range on your 'must buy' list!

Direct Containers - YOU GOT IT!

Ashleigh

Formidable range of solid oak furniture manufactured to a very high standard. Would suit any room here.

Regular deliveries from stock - YOU GOT IT!

Xanga

(Exclusive to Sunshine). Superb range of dark stained pine.

Delivering quality, service and excellent value

Corona

Massive sales. Rustic oak with great appeal to the buying public. Huge range available at very competitive prices.

Our fantastic furniture ranges suit all rooms

Visit us at
The Furniture Show
on 20th - 23rd January at
Hall 3, Stand E81, Birmingham NEC

Unforgettable show offers on Solid Oak and Corona
Don't miss it!
See overleaf for details

Island Distributor
WHITESTONE
AGENCIES LTD
Tel: 028 8673 7766 Fax: 028 8673 6217

Double page spread 1

Our aim is your success

Email: sales@sunshineheart.co.uk
or call 01652 637716
or fax 01652 637717

s f a
FURNITURE
& WALL DECORATION

Solid oak 6ft by 3ft table and 6 leather effect chairs.

£225

Solid Oak

Special promotion price

Pine table and 4 chairs.

£110

Corona

Special promotion price

Pine table and 6 chairs.

£120

Flat packed

Special promotion price of £225 when you buy 10 or more sets at the Furniture Show*.

Promotion prices only available when you buy 10 or more sets at the Furniture Show*.

Huge range of mirrors and canvasses

Prices starting from just £2.54

Artist's Choice
100x100cm large format digital canvas supplied as shown in picture made to order.
Price from **£18.45** per pc.

Mirrors
Simple range of competitively priced mirrors in MDF, plastic and glass on glass.
Glass on glass prices from **£5.53** (ie 50x50cm).
Normal mirror prices from **£10.00** (ie 60x90cm).

Poster Box
Large range of posters from **£4.95** per poster.

Canvas Effect
Most competitively priced canvas type product on the market.
Prices from **£2.54** (ie 50x50cm).

Digital Canvas
Exclusive designs to Sunshine. High definition images printed on 11 grade canvas.
Prices from **£5.40** (ie 60x80cm).

Hand Painted Canvases
High quality designs, use of texture oil to give that **WOW** factor.
Prices from **£9.32** (ie 60x80cm).

Visit us at **The Furniture Show** on 20th - 23rd January at
Hall 3, Stand E81, Birmingham NEC

Island Distributor
WHITESTONE
AGENCIES LTD
Tel: 028 8673 7766 Fax: 028 8673 6217

* Show promotions apply to mainland United Kingdom only

Double page spread 2

Dremu Leaflet

A 4 page A5 leaflet for a cosmetic importer.

A leaflet to promote beauty products for a cosmetics importer.

Plenty of Photoshop work for the cutouts and enhancing the product photos plus Illustrator work for the logo graphics.



Front and back cover

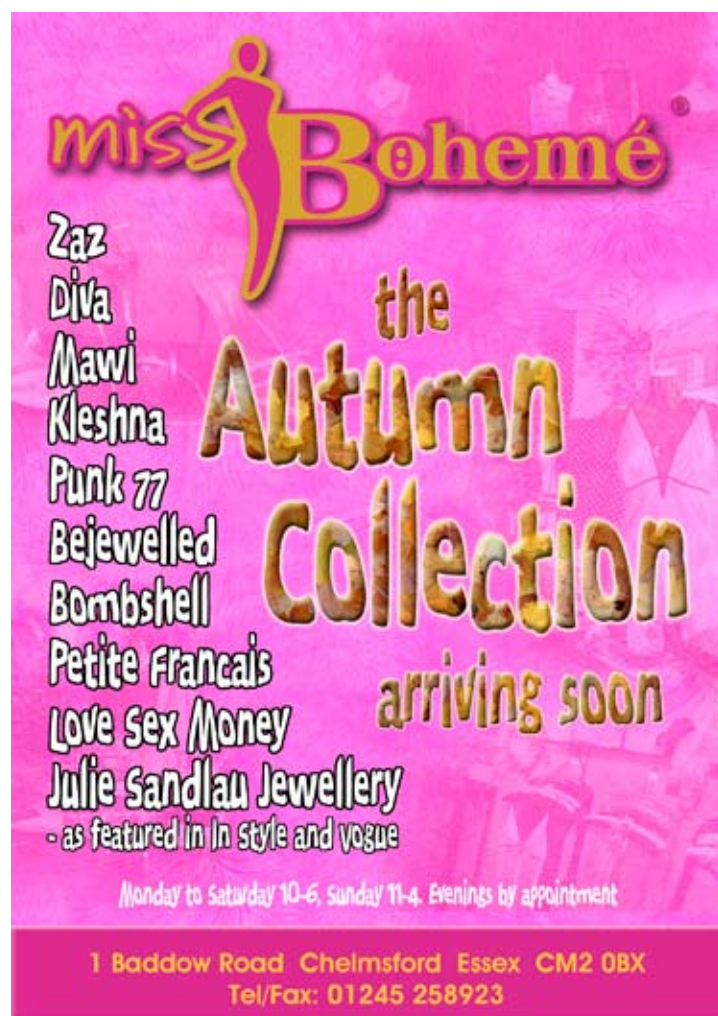


Inside spread

Miss Bohémé Leaflet and Advert

Leaflet and advert for a women's clothes shop.

An A5 leaflet and an advert for a local magazine to promote a high quality women's clothes shop.



Leaflet



Advert

Magic Sizing Leaflet

A double sided leaflet promoting Magic Sizing.

I created all the illustrations in Illustrator including the banners, text, iron, spray can and shirt with a few enhancements in Photoshop.



Front



Reverse

FAB Projects Leaflet

A double sided leaflet on stiff card for a specialist textile printing company.

A double sided leaflet using photos supplied by the client. Quite extensive Photoshop work was required particularly to the bottom image on the front.

FAB Projects

Projects in Fabric



FAB Projects

We have been involved in the manufacture and project management of branded textile products since the late eighties, supplying banners, flags and printed textile features for some of the top events and branding projects in the country.

FAB Projects brings functional quality textile branding in from the elements to be enjoyed and appreciated in an indoor environment.

For more information or enquiries:

Tel: 01245 262438

Mobile: 07983 994662

Email: sales@fabprojects.net

Windsock Company Ltd T/A FAB Projects in association with 



www.fabprojects.net

Front

FAB Projects

Projects in Fabric



Custom Branded Textile Screening

- Custom made fabric screening and features for office, retail and public environments.
- Can be made in any size or shape to perfectly fit your requirements.
- Choice of plain coloured fabrics or can be digitally printed to your requirements with any image or graphic.




- Use as a decorative feature or to separate floor space areas.
- Use cool graphics and shades to create a calm or soft atmosphere.
- Show off your corporate identity or use as an advertising feature.
- Jazz up an area with bold graphics and lively colours.
- Adds eye catching interest to public and office environments.
- Screening panels can be manufactured in straight or curved sections and can be hinged together.
- Minimum assembly using an Allen key allows for easy moving and reconfiguration.
- All fabrics are flame retardant.




- Personal service includes site visit, fully specified quotation and project management to achieve your requirements.
- Installation service available.

www.fabprojects.net

Reverse

Knaveswell Farm Cottage Brochure

A 6 page, 1/3 A4 brochure for a holiday cottage owner.

A small brochure to promote a holiday cottage in Dorset. The main photos were supplied by the client. I sourced the background image and created the map illustration.



Outside three pages

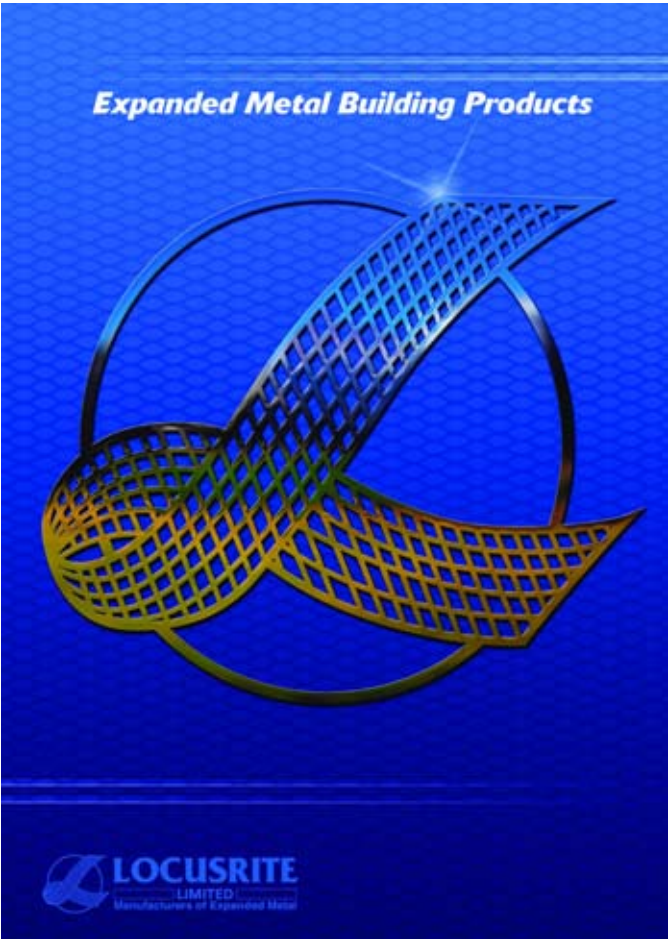


Inside three pages

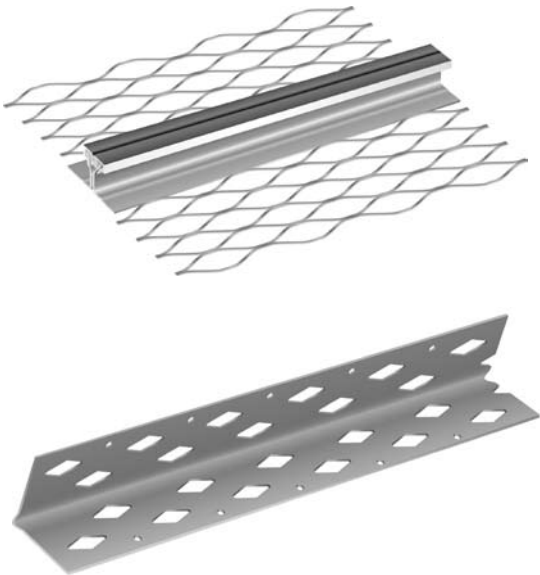
Locusrite Brochure and Folder

A 20 page brochure and folder for a manufacturing company.

A brochure and folder with tables and product details. The cover and logo were produced in Photoshop and I created all of the product illustrations in Illustrator. Just a few are shown here.



Front cover



Galvanised and Stainless Steel Locusrite Brick Reinforcement Coil

Specification
All galvanised materials are manufactured from steel to DX51DSEN 10142 (g 275).
Stainless steel materials are manufactured from steel to EN 10088-2 grade 1.4301 (standard supercedes BS1449 Part 2: 1983 grade 304 S15).

Application
Locusrite Coil Mesh Lath is produced for brick and block work reinforcement. Its primary usage is to prevent cracking.

Coil Mesh Lath is available in 20 or 100 metre coils.

Code	Material	Size (mm)
GBWR063	Galvanised Steel	63
GBWR100	Galvanised Steel	100
GBWR175	Galvanised Steel	175
GBWR225	Galvanised Steel	225
GBWR305	Galvanised Steel	305
SSBWR063	Stainless Steel	63
SSBWR100	Stainless Steel	100
SSBWR175	Stainless Steel	175
SSBWR225	Stainless Steel	225

Galvanised and Stainless Steel Locusrite Corner and Strip Mesh Lath

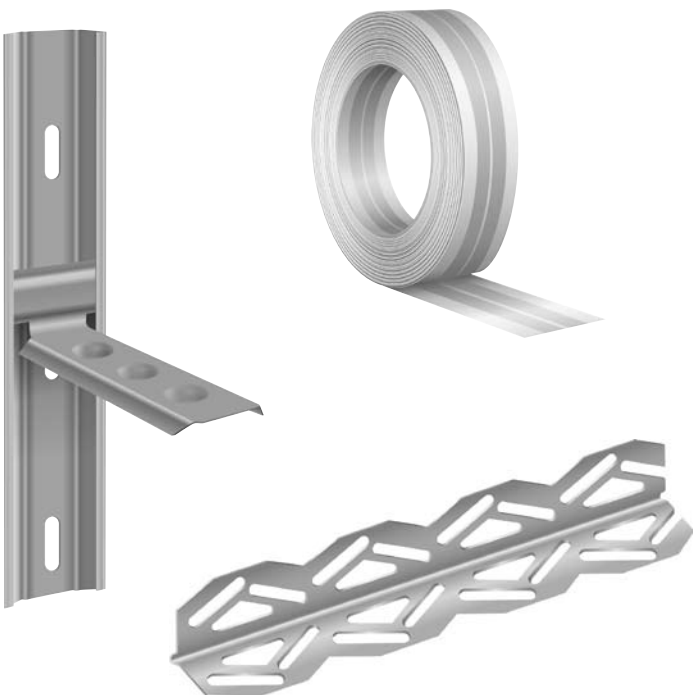
Specification
All galvanised materials are manufactured from steel to DX51DSEN 10142 (g 275).
Stainless steel materials are manufactured from steel to EN 10088-2 grade 1.4301 (standard supercedes BS1449 Part 2: 1983 grade 304 S15).
Corner and Strip Mesh Lath is manufactured in accordance with BS1369 Part 1: 1987.

Application
Locusrite Corner Mesh Lath is produced for use on internal and external corners in order to prevent cracking in the plaster.
Locusrite Strip Mesh Lath is produced for use along stress lines where cracking is likely to occur.

Corner and Strip Mesh Lath comes in 100 strips per bundle.

Code	Material	Size (mm)
GCM250	Galvanised Steel	2500 x 100
GCM875	Galvanised Steel	2500 x 175
SSCM250	Stainless Steel	2500 x 100
GSM100	Galvanised Steel	2500 x 100
GSM175	Galvanised Steel	2500 x 175
SSSM100	Stainless Steel	2500 x 100

Inside page



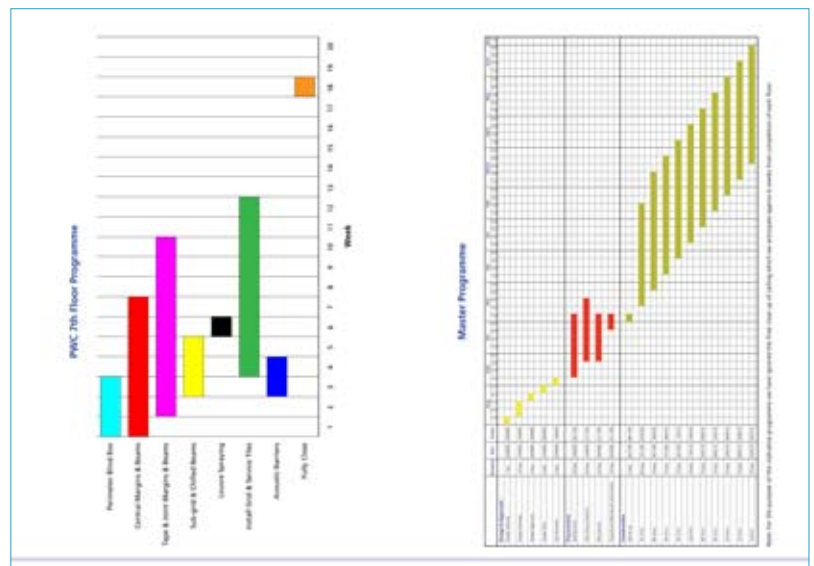
BPC Interiors Tender Document

A 96 page, A4 tender document for a suspended ceilings and partitioning contractor.

This was a large document to form the basis of a tender for a major construction project. The client was successful in their bid. It included bar charts, gantt charts, personal profiles and A3 fold out spreadsheets.



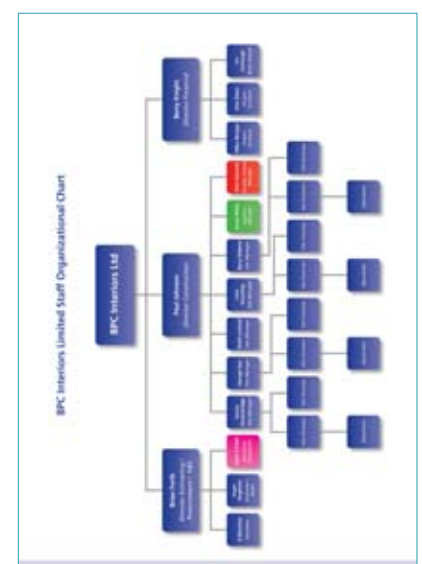
Front cover



Inside page



Inside page

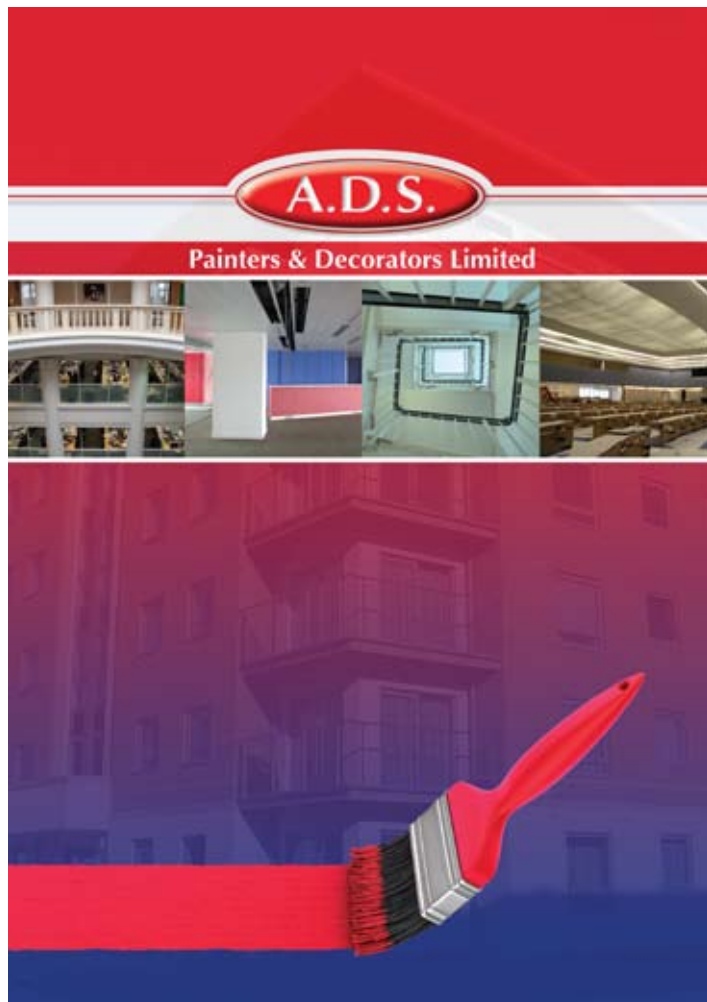


Inside page

ADS Brochure

A brochure for a painting and decorating contractor.

This was produced to be digitally printed so that it can be updated regularly and printed and bound in small quantities as and when required.



Front cover



Inside page

4. Project Examples

ADS are currently working on a wide-range of projects (over 50 projects were undertaken during 2008).

Recent and past projects include:

- DEFRA, Nobel House, London, SW1, for Overbury PLC
- Chelsea Football Club Close Season Works 2005 for Overbury PLC
- Blocks 36 & 49, Royal Arsenal Woolwich for Berkeley Homes
- Mark Mason's Hall, St James Street, London, SW1 for Kajima
- Aragon Towers, Deptford, London, SE8 for Apex Contractors
- Ordell Road, Bow, London, E3 for Denne Construction
- The Belgium Embassy, London
- Adelaide House
- Aldenbury Square
- BDO, 55 Baker Street
- International Maritime Organization
- M&G Investments, Governor House
- Moor House
- Battersea Kingsway College
- Hammersmith Pump House



Inside page

Letterhead, compliment slip and a number of NCR forms for a construction company.

BPC Interiors Limited
 Arch 261 Paradise Row
 London E2 9LJ
 tel: 020 7613 5885
 fax: 020 7613 5354
 email: info@bpcinteriors.com
www.bpcinteriors.com

[illegible][illegible]

Business Cards

Assorted business cards.

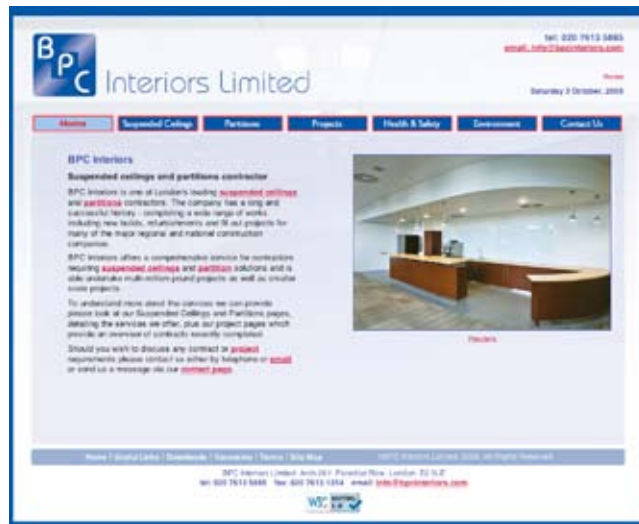
Various business cards, many of which I designed the logos too.



Web Design

Various websites.

I have designed and put together a number of websites. The pages are hand coded and validated to ensure standards compliance. A few of these are shown below with their web addresses so please check them out.



www.bpcinteriors.com



www.finetrack.co.uk



www.metal-mesh.co.uk



www.stevebridgerart.co.uk

Illustration

Various illustrations.

This is a small selection of my illustrations. I can produce logos, technical illustrations, artwork for interior design and pretty much anything you may require. Please see my website www.stevebridgerart.co.uk for more of my artwork.

